

MD300 Electronic Eyepiece Installation Instructions

Introduction

Congratulate for you owning the MD300 Electronic Eyepiece. This Eyepiece has 3.0M pixel, it is suitable for any standard biological telescope, stereomicroscope or metallography microscope. The Eyepiece can change images into digital signal, and send it to your PC, so that you can obtain, analyze the digital image and communicate with other people. Also the Eyepiece can work with other tools, such as projection machine, CD rewriter, and notebook PC, and it will make your work easy, interesting, and effective.

Package Contents

When first opening the packing box, note carefully the following parts:

·MD300 Electronic Eyepiece ·CD-ROM · Adaptor ring ·Operating Instruction ·USB2.0 Cable

System Requirements

- Windows 2000/XP
- Pentium III 800 MHz or equivalent
- 100 MB free hard drive space for program installation
- 256 MB RAM (512 MB DDR RAM recommended)
- 16-bit color display at 800x600 (32 MB video memory with DirectX 3D support recommended)
- DirectX 8.1 or higher

Driver installation

1. Do not plug the USB cable into your PC at this time and close all the running programs before installing the driver.
2. Choose the **driver----setup** to install the MD300 driver
3. Select the language and click the "**NEXT**" to continue
4. The install wizard appears. Please wait. It is better not to click "**Cancel**" to exit.
5. Welcome to the InstallShield Wizard for MD300 DRIVER, to continue, click "**Next**"
6. Setup status. setup is performing the requested operations. Don't click the "**Cancel**" to exit.
7. System is scanning for new device. Please wait a while...
8. Setup Complete. Please click "**Finish**" button to exit install.

To connect Electronic Eyepiece

Before connect the Electronic Eyepiece to your PC, please confirm that the **USB2.0 interface** on your PC is all right.

1. Take out one optic eyepiece of the using microscope, put in the electronic eyepiece.
2. Connect the **USB2.0 cable** of the Electronic Eyepiece to your PC
3. "**Find a new hardware**" of your PC screen
4. The "**hardware wizard**" window displays. The driver is installed.

Using the Acrsoft software

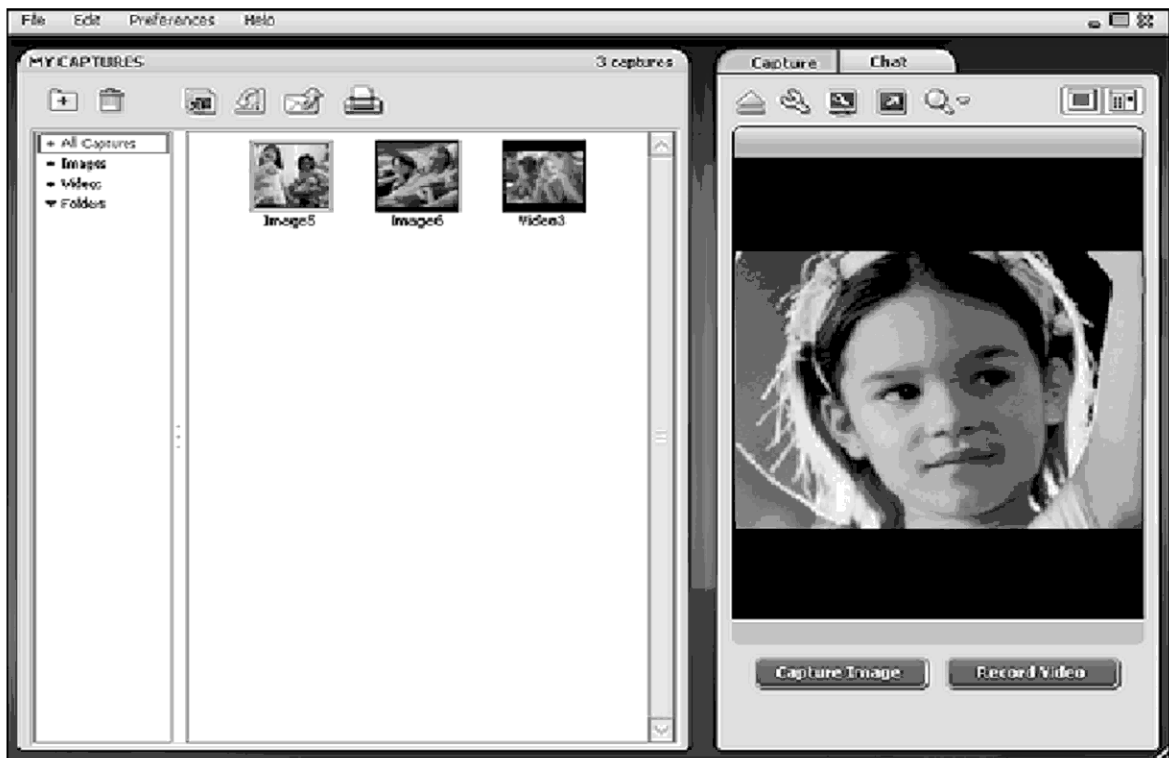
Please Install the **Acrsoft** software first. Choose the **Acrosft----setup** to install the software.

CAMERA PREVIEW AREA

1. Click "Start"
2. Select "Programs -- ArcSoft WebCam Companion-- WebCam Companion"
3. The program is divided into two main sections: My Captures, and the camera preview area. You can adjust which section is larger by simply clicking and dragging the area in between the two sections.

Note: Folders may vary from version to version. Monitor the installation process to verify the location in the Start menu.

Also, you may start the program by double-clicking the desktop icon (if available).

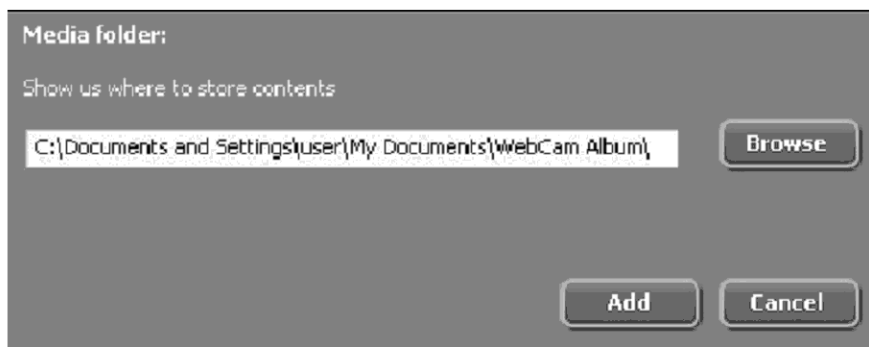




□

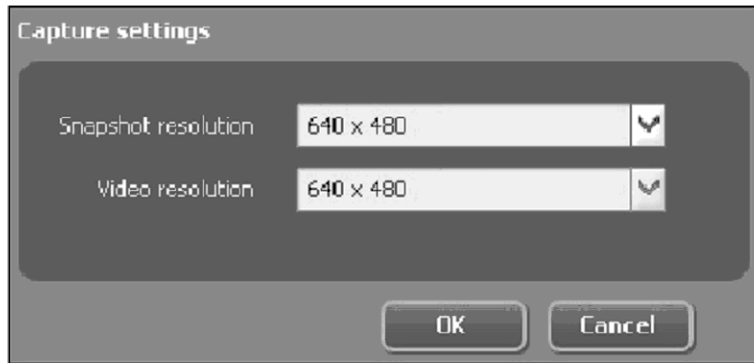
□

If your webcam does not start (the preview area on the right side does not display live video from your camera,) you can select "File | Start Web Camera".

4. Before capturing, please set up a folder to save images, and verify the webcam and capture settings to ensure the captured images match your expectations.
5. Click "Preferences | Media Folder" to open a dialog box so you can select the location to store captures. Click the "Browse" button to select a different folder. When ready, click the "Add" button to confirm; or click the "Cancel" button to exit without



6. Click  to adjust your webcam settings/preferences. The options will vary depending on your device. Consult the device documentation for details.
7. Click  to view and modify the capture preferences.



Select the resolutions for your image snapshots and video captures. The resolutions define the size of captured files. Generally speaking, the higher resolution you select the larger file size you will get.

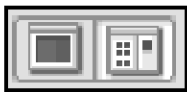
8. Adjust the position of your webcam to show the desired scene in the live preview area, then click the "Capture Image" button. The newly captured image will be saved to the destination folder you have selected and a thumbnail image will be added to My Captures.
9. Adjust the position of your webcam to show the desired scene in the live preview area, then click the "Record Video" button. The Record Video button will change to "Stop Recording" while recording. Click the "Stop Recording" button to end the recording. The newly recorded video will be saved to the destination folder you have selected and a thumbnail image will be added to My Captures.



10. **Eject** - Disconnect your webcam. If you need to reconnect the webcam, select "File | Start Web Camera".



11. **Full-Screen** - Display your webcam preview over the entire screen. Press ESC to exit full screen mode.



12. **Hide/Show Left Panel** - Hide or display the My Captures section, respectively. Hide the My Captures section if you'd like to focus more on your live webcam preview.

□□ MY CAPTURE

After capturing many images and videos, it can be difficult to find a specific file you're looking for. This application allows you to organize your files into meaningful groups that make it quick and easy to find just the file you're looking for.

1. This section in My Captures allows managing all your captured images and videos:



2. **MANAGE FOLDERS** By default, there are four folders in the folder list to help you manage your captures. They are:

All Captures - This folder shows all the captured images and videos.



All Images - This folder shows all the image files you have captured.

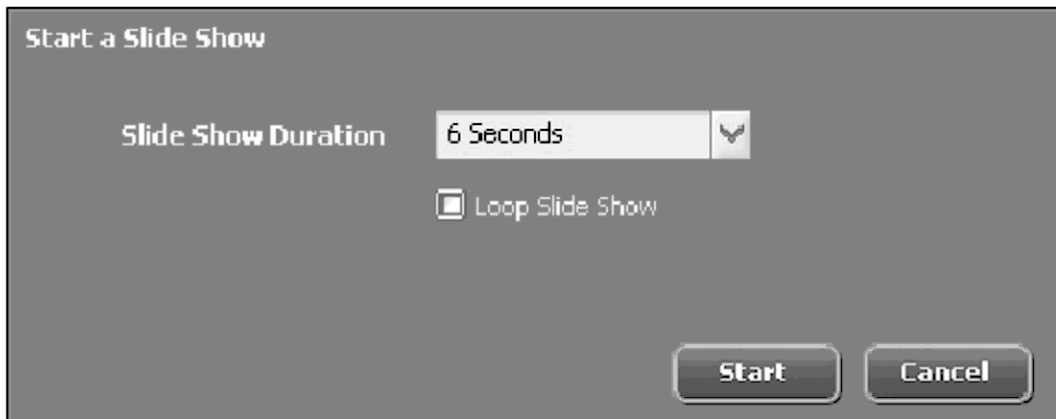
All Videos - This folder shows all the video files you have recorded.

NOTE: •These default albums manage original files. The operation taken to them will also apply to the original files. For example, deleting a thumbnail image will also delete the image file from your hard drive. Other normal albums operate as just a "link" or "shortcut" to the file and deleting the thumbnail would have no effect on the source image




•You cannot Cut files in these albums as well as Paste files to these albums.

•You cannot rename these albums.

3.  **Folders** - This folder is used to organize your captured files. Click "New Folder" icon to build a new folder under Folders. Double click the new folder to rename it to something meaningful. You can Copy files from one folder and Paste them into another to better organize them. (For example, copy all the images in All Images from a particular day into a folder you named with that date.)
4. Select "Folders" and you will see all the folders in My Captures preview area. Click the arrow icon beside "Folders" (marked 1) and you will see the folders listed. Click the arrow icon beside each folder (marked 2) to display the files in it.
5. Click  to view your images as a slide show.



Select the slide show duration from the pull-down list. Check the "Loop Slide Show" box to have the slide show automatically restart when it finishes. (Press ESC to exit a looping slide show.) When ready, click the "Start" button; or click the "Cancel" button to exit.

6.  Select the unwanted file, and click the "Delete" icon to remove the file. You can also press the "DEL" key on your keyboard to delete a file.
7.  **Rotate** - Rotate the selected files 90 degrees left.
8.  **Videolmpression** - Start Videolmpression to create and edit a movie or slide show if you have it installed.

Note: If you have not installed Videolmpression, the icon will not appear in this program.